



2021

Paarlaufen

Allgemeines



Wer sitzt im Panel:

1. Technical Panel:

- Spezialist/in (Called die Elemente)
- Techn. Assistent/in (PreCall/Review/BM)
- Controller (Time/notiert edge of Spins/
Jumps/Control Data Entry)

Review for <<



2A <



Time !

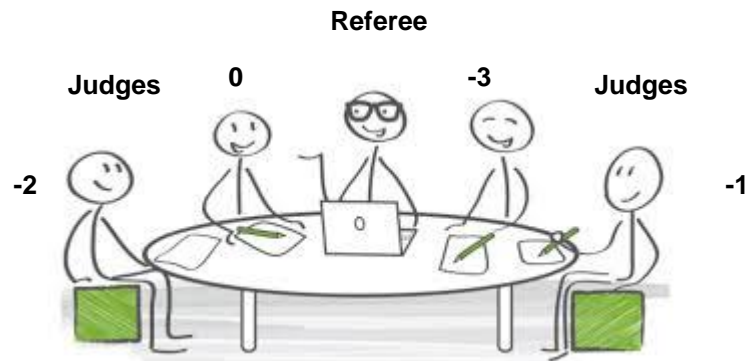


Data Operator:



Aufgabe: **Was** wurde gemacht ?

Judges Panel



Element: **Wie** wurde es gemacht ? – QOE

Komponenten: Skating Skills/Transitions/Performance/Choreography –
wie wurden sie gemacht ?

QOE



Bewertung der Ausführung / Qualität der Elemente

-3	-2	-1	0	+1	+2	+3
			Basis	1-2 Features	3-4 Features	5-6 Features

Elemente im Detail

QOE

LIFTS



Welcher Arm hebt ?
Position Dame ?
Mohawks Herr ?
Aufgang/Abgang Stopper ?



Lifts

Features

- Good Take Off and Landing by both skaters
- Correct Position in the air and artistically good
- Good Usage of the rink during the execution
- Good execution of the mohawks by the man; close feet, quick and clear edges
- Good speed and fluidity
- Not displaying effort or strain during the execution of the element
- Match with the music



Lifts



Errors for which QOW must be the one listed	
Fall	-3
Major problems during take-off (TOE-STOP !)	-3
Fall of the lady over the partner	-2 or -3
Take-off and/or landing of the lady on two feet	-2 or -3
Using man's shoulder to land	-2 or -3
Lifts below head: Sitting on man's back or shoulders	-3



Lifts



QOE may vary	
Wrong Position in the Air	-1 to -3
No good take-off quality	-1
Wrong take off	-2
Lack of Speed and or length of the lift	-1 to -3
Wrong or poor execution of mohawks	-1 to -3
Use of Toe stops during Mohawks	-2
Long Preparation	-1
Hand or free-leg on the floor during landing	-1



Beispiel



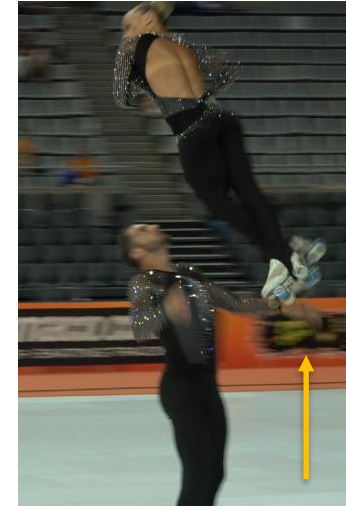
Positiv	Negativ
Gute Mohawks	Schwungverlust
Match with Music	
+1	-2

Gesamt

-1

TWIST

Twist



Twist

Features

- Good Take Off and Landing by both skaters
- Good Position of the man just after the throw
- Good Usage of the floor during the execution
- Good speed and rhythm from the beginning to the end
- Good height of the lady in the air
- Not displaying effort or strain during the execution of the element by both partners
- Match with the music
- Clear and evident split of the lady



Twist



Errors for which QOW must be the one listed	
Fall	-3
Major problems during take-off (TOE-STOP !)	-3
Fall of the lady on the partner	-2 or -3
Landing on two feet	-2 or -3
Lady not caught on landing	-2 or -3
Two hands on the floor during landing	-2 or -3
Downgrade <<<	-3



Twist



QOE may vary	
No height, no length	-1 to -3
Not good take off	-1 or -2
Using man shoulders during catch	-1 or -2
Lack of Speed and or length of the lift	-1 to -3
Poor landing (no face to face, no speed, incorrect position)	-1 to -2
No catching	-2
Long Preparation	-1
Man on two feet	-1
Underrotated <	-1
Half rotated <<	-2
Hand or free-leg on the floor during landing	-1
Man's arms not stretched during the throw	-2



Spirals

Todesspirale



Spiral

Features

- Good fluidity in entry and exit
- Good control and speed when position is reached
- Good quality of position of both partners
- Clear and constant edge of the pivot
- Controlled position during the entry
- Not displaying effort or strain
- Creativity and originality
- Match with the music



Spiral



Errors for which QOW must be the one listed	
Fall	-3
Wrong pivot position	-2 or -3



Spiral



QOE may vary	
Lady wrong position (not good reversed position, not at the same level of skating knee)	-1 to -3
Errors in exit	-1 or -3
Slowness and Speed reduction	-1 or -2
Not clean and clear edge of the lady	-1 to -2
Wrong position of the man	-1
Not fluent edge of the man	-2

Contact Spin

Contact Spin

Features

- Good Control during the execution of the element (entry, rotation and exit)
- Good speed and acceleration during the execution
- Difficult variations
- Balanced number of rotations in each position
- Number of rotations higher than the minimum
- Originality and Creativity
- Continuity, fluency and easy execution of the spin
- Match with the music



Contact Spin



Errors for which QOW must be the one listed	
Fall	-3
Two Hands on the floor to avoid a fall	-3



Contact Spin



QOE may vary	
Incorrect Position, slowness, travelling	-1 to -3
Lay Over Camel (leg over lady) where the leg does not always pass over the lady (minimum two revolutions must be passed)	-2
Wrong change of foot / toe stop	-1 or -3
One hand or free leg on the floor for lost balance	-2 to -3
Lack of unision and big distance between partners	-1 or -3
Impossible sit, the lady uses free leg to exit the sit	-2
Impossible sit, not a clear outside edge of man for entirety of the spin	-2





NEU !

Lady uses free leg in impossible during exit

Fragen

